

PMU Factory Training Catalog

Version: 01

Published: 1/13/2026



Power Management University
pmutraining.com

PMU
TRAINING CENTER

Table of Contents

Power Management University (PMU)

About PMU	3
-----------	---

PMU Factory Training Defined	4
------------------------------	---

PMU Factory Training Options

EcoStruxure™ PME – Operator Training	6
--------------------------------------	---

EcoStruxure™ PME – Advanced Operator Training	7
---	---

EcoStruxure™ PME – ION Architecture Programming using Designer	8
--	---

EcoStruxure™ PME – Energy Billing Module Deployment	9
---	---

EcoStruxure™ PME – TGML Graphics Editor & User Diagrams	10
---	----

EcoStruxure™ PME – VISTA Graphics Editor & User Diagrams	11
--	----

PowerLogic™ & ION Metering Hardware – Installation & Maintenance	12
--	----

Purchasing & Registration

Purchasing a seat for PMU Factory Training	14
--	----

Requesting a Quote for PMU Factory Training	15
---	----

Registering for PMU Factory Training	16-20
--------------------------------------	-------



Power Management University (PMU)

About us

PMU is the US based education team dedicated to providing best-in-class training on the various Electrical Power Monitoring System (EPMS) software and related products Schneider Electric has to offer.



Our Students

PMU offers courses that benefit end users, partners and even service roles within the energy segment, such as Energy Managers, Facility Technicians, Site Engineers and Utility Workers.

Our Specialty

PMU offers training on the following EPMS software and hardware:

EPMS Software:

- EcoStruxure™ Power Monitoring Expert (PME)
- EcoStruxure™ Power Operation (EPO)
- PowerLogic™ ION Setup Software

PowerLogic™ and ION Meters

- ION9000 • PM8000 • PM800 • EM4900
- ION8650 • PM5000 • CM4000 • EM4200
- ION7400 • PM3000 • HDPM6000 • EM3500

Communication Devices:

- EcoStruxure™ Panel Server • Com'X
- EcoStruxure™ Site Server • EGX
- Enerlin'X



PMU Factory Training Defined

PMU Factory Training courses are Instructor-led events with pre-defined agendas hosted on specific dates throughout the year that are available for registration by anyone interested.

Students will learn various EPMS topics through a series of presentations and demonstrations, followed by extensive hands-on practice via guided lab exercises.

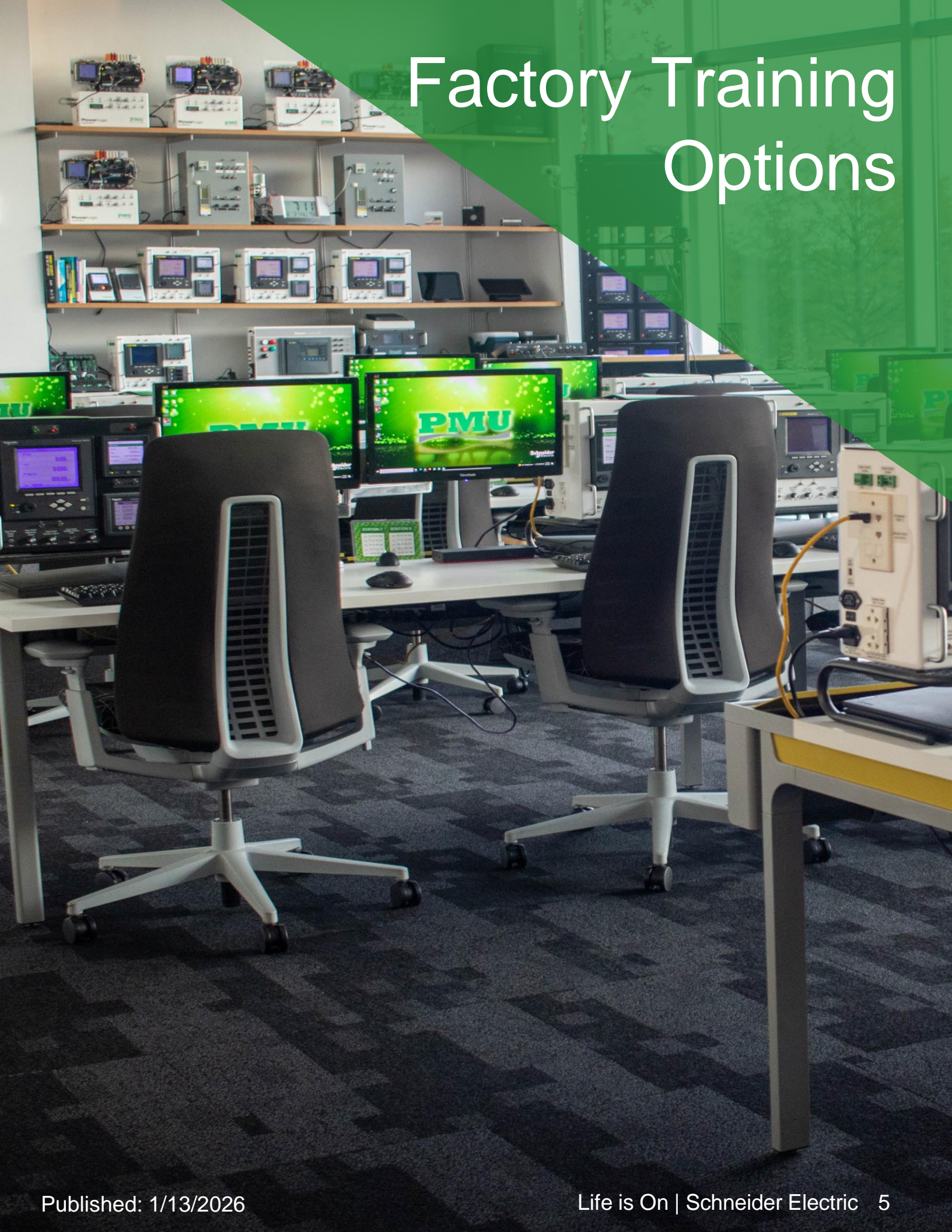


Made possible by our state-of-the-art training room, each student will be assigned their own dedicated training lab station providing them full access to our EPMS software and hardware.

With both in-person and virtual options available, a **PMU Factory Training** course is a perfect option for our customers with a minimum number of attendees that are looking for a low-cost option for standardized training on their EPMS system.



Factory Training Options



EcoStruxure™ Power Monitoring Expert (PME)

Operator Training (PMEOT100)

Description:

This 3-day instructor-led course focuses on providing an introduction into the PME software. Through a series of presentations and hands-on lab exercises, students will learn the general capabilities of the software, with a focus on day-to-day operational tasks within the web application such as Dashboards, Trends, Alarms, Reports, Device and User Management. Students will also receive an overview of basic EPMS and power fundamental topics including terminology, utility billing and meter selection and basic communications.



Audience:

This course is designed as an entry level training and is recommended for anyone that is or will become involved with using this software as part of their day-to-day role.

Course Details:

Duration:

- 3-Days

Delivery Options:

- Classroom (CR)
- Virtual Instructor-Led (VILT)

Part Numbers (SKUs):

- (CR) 3000PMU3DAY
- (VILT) 3000PMUWEB3DAY

Prerequisites:

- None

Students will be provided:

- Course material including presentations, labs, etc.
- Lunch (classroom only)
- Access to demo software & hardware
- Certificate of completion
- CEUs: 1.8

Agenda:

Day 1	Day 2	Day 3
Intro to PME Software & Web Client	Viewing & Navigating Diagrams	Viewing & Creating Trends
User Management	Intro to Power Fundamentals & Utility Bills	Viewing & Creating Reports
Supported Devices	Viewing & Creating Dashboards	Viewing & Managing Alarms & Event Notifications
Adding & Managing Native Devices		

Registration:

[Click here](#) to view available dates and to register for this course, or visit pmutraining.com

This course typically runs **Tuesday – Thursday, 9am – 4pm (CT)** unless otherwise noted during the registration process.

Question? Email pmu@se.com

EcoStruxure™ Power Monitoring Expert (PME)

Advanced Operator Training (PMEAOT200)

Description:

Formerly known as Administration & Maintenance, this 3-day instructor-led course focuses on teaching students how to manage and maintain a PME system. Through a series of presentations and hands-on lab exercises, students will learn the design of a PME system as well as how to maintain it by adding connected devices, building meter hierarchies, and creating custom graphics screens to accurately represent a system. The course will also cover integrating PME with 3rd party hardware, as well as database management, system maintenance, backup and disaster recovery planning.



Audience:

This course is designed for anyone who is responsible for administering, maintaining, and/or supporting a PME system, such as system administrators, IT Admins, and advanced PME users.

Course Details:

Duration:

- 3-Days

Delivery Options:

- Classroom (CR)
- Virtual Instructor-Led (VILT)

Part Numbers (SKUs):

- (CR) 3000PMU3DAY
- (VILT) 3000PMUWEB3DAY

Prerequisites:

- Basic familiarity with PME
- Basic familiarity with Microsoft Windows operating systems
- Basic familiarity with power and energy topics & terms

Students will be provided:

- Course material including presentations, labs, etc.
- Lunch (classroom only)
- Access to demo software & hardware
- Certificate of completion
- CEUs: 1.8

Agenda:

Day 1	Day 2	Day 3
Introduction to PME Software	Hierarchies & Virtual Meters	Database Maintenance
Introduction to Engineering Clients	Diagrams & TGML Graphics Editor	System Troubleshooting
Management Console / Device Manager	3rd Party Device Integration	Disaster Recovery
Logical Devices		

Registration:

[Click here](#) to view available dates and to register for this course, or visit pmutraining.com

This course typically runs **Tuesday – Thursday, 9am – 4pm (CT)** unless otherwise noted during the registration process.

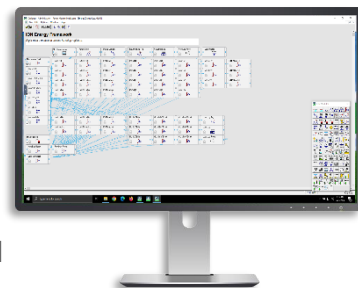
Question? Email pmu@se.com

EcoStruxure™ Power Monitoring Expert (PME)

ION Architecture Programming using Designer (PMEIONPROG300)

Description:

Formerly known as Advanced Programming, this 4-day instructor-led course focuses on system and device level customization using the Designer Application in PME. Through a series of presentations and hands-on lab exercises, students will learn the architecture of ION meters, as well as how to create custom programs for equipment monitoring, alarming, and logging. They will also learn the Virtual ION Processor (VIP) for programming Modbus meters and 3rd party equipment. PME Designer and TGML Graphics Editor will also be covered, as well an overview of how programs can be used in PME's graphic screens. Students will create multiple frameworks for integrating WAGES devices, control and process applications, logging, alarming, and custom calculations.



Audience:

This course is intended for meter/instrumentation technicians, system engineers, and system integrators who need to learn how to get the most out of their PME software and associated meters.

Course Details:

Duration:

- 4-Days

Delivery Options:

- Classroom (CR)
- Virtual Instructor-Led (VILT)

Product Numbers (SKUs):

- (CR) 3000PMU4DAY
- (VILT) 3000PMUWEB4DAY

Prerequisites:

- Basic familiarity with PME
- Basic familiarity with Microsoft Windows operating systems
- Basic familiarity with power and energy topics & terms

Students will be provided:

- Course material including presentations, labs, etc.
- Lunch (classroom only)
- Access to demo software & hardware
- Certificate of completion
- CEUs: 2.4

Agenda:

Day 1	Day 2	Day 3	Day 4
ION Architecture & ION Modules	TGML & Designer Integration	Clock Module	Setpoint Module
Designer Navigation & Interface	Counter Module	Periodic Timer Module	Digital I/O
ION Meter Back-up & Restore	Arithmetic Module	Data Logging Framework	Modbus Mastering

Registration:

[Click here](#) to view available dates and to register for this course, or visit pmutraining.com

This course typically runs **Monday – Thursday, 9am – 4pm (CT)** unless otherwise noted during the registration process.

Question? Email pmu@se.com

EcoStruxure™ Power Monitoring Expert (PME)

Energy Billing Module Deployment (PMEBILLMOD)

Description:

This 1-day instructor-led course provides students the information need to successfully deploy and use the Energy Billing Module, which is one of the most common add-on features of PME. This optional module is used to develop accurate, complex energy bills using data collected in PME's database. This module can be used for utility bill verification, load cost analysis, or even tenant billing. Students will learn how to develop advanced rate schedules using both the XML billing templates as well as the Time of Use (TOU) Editor. They will then learn how to generate these reports based on these rates.

Audience:

Anyone who has a need to deploy and configure the Energy Billing Module. While the focus is on system integrators, this may also include end-users who need to configure or modify the usage of this module.

Course Details:

Duration:

- 1-Day

Delivery Options:

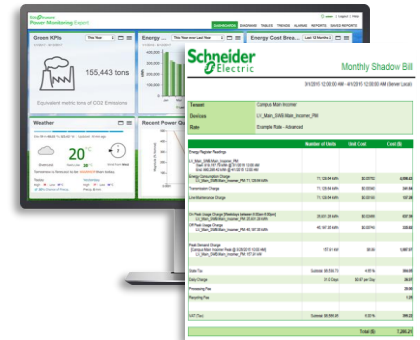
- Virtual Instructor-Led (VILT)

Product Numbers (SKU):

- (VILT) 3000PMUWEB1DAY

Registration:

[Click here](#) to view available dates and to register for this course, or visit pmutrainig.com



Prerequisites:

- Basic familiarity with PME , including meter hierarchy configuration
- Basic familiarity with Microsoft Windows operating systems
- Basic familiarity of utility billing rate terms

Students will be provided:

- Course material including presentations, labs, etc.
- Access to demo software for hands on lab assignments
- Certificate of completion
- CEUs: 0.6

Agenda:

1-day Agenda

Billing Reports Templates Overview

Billing Module Hierarchy

Utility Rate & Rate Schedule Files

Tiered Demand Rate Structures

Time-of-Use (TOU)

IT & Managed Circuits

This course typically runs **9am – 4pm (CT)** unless otherwise noted during the registration process.

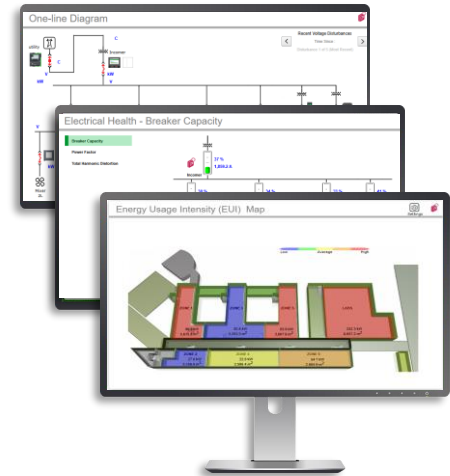
Question? Email pmu@se.com

EcoStruxure™ Power Monitoring Expert (PME)

TGML Graphics & User Diagrams (PMETGML)

Description:

This 1-day instructor-led course focuses on teaching students how to create, modify, and manage PME User Diagrams using the new graphics editor tool called TGML. Made available as part of the PME2023 release, this tool will eventually replace the legacy Vista graphics tool. It uses a more advanced XML-based TAC Graphics Markup Language (TGML) format for dynamic 2D Graphics, which is the same language many other Schneider software applications use, such as EcoStruxure Power Operation (EPO) and EcoStruxure Building Operations (EBO). User Diagrams allow PME users to display real-time and historical data, monitor events and alarms, and control a variety of system functions within the PME web client. Students will learn how to use this new TGML tool through a series of presentations and hands-on lab exercises.



Audience:

This course is designed for anyone interested in learning how to create, modify and manage User Diagrams within the PME web client using the new TGML graphics editor tool.

Course Details:

Duration:

- 1-Day

Delivery Options:

- Virtual Instructor-Led (VILT)

Product Number (SKU):

- 3000PMUWEB1DAY

Prerequisites:

- Basic familiarity with PME
- Basic familiarity with Microsoft Windows operating systems

Students will be provided:

- Course material including presentations, labs, etc.
- Access to demo software for hands on lab assignments
- Certificate of completion
- CEUs: 0.6

Agenda:

This course typically runs **9am – 4pm (CT)** unless otherwise noted during the registration process.

1-day Agenda

TGML Overview

Drawing Tools, Objects & Properties

Components & Binding

Groups, Arrange, Layers & Snippets

Building a One-line

Applying TGML Graphics to PME User Diagrams

Registration:

[Click here](#) to view available dates and to register for this course, or visit pmutrainig.com

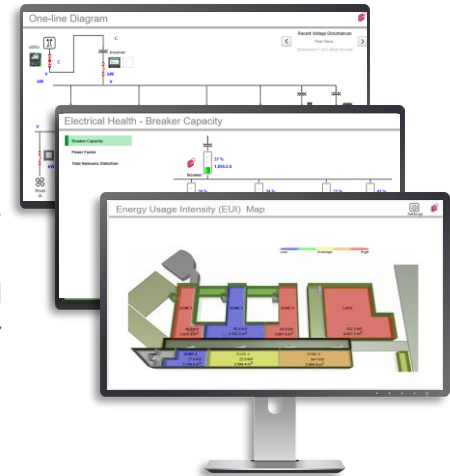
Question? Email pmu@se.com

EcoStruxure™ Power Monitoring Expert (PME)

Vista Graphics & User Diagrams (PMEVISTA)

Description:

This 1-day instructor-led course focuses on teaching students how to create, modify and manage PME User Diagrams using the legacy graphics editor tool called Vista. User Diagrams allow PME to display real-time and historical data, monitor events and alarms, and control a variety of system functions within the web client. Through a series of presentations and hands-on lab exercises, students will learn how to use the Vista engineering client to modify and troubleshoot existing Vista User Diagrams, as well as create new custom User Diagrams.



Audience:

This course is designed for anyone interested in learning how to create, modify and manage User Diagrams within the PME web client using the legacy Vista graphics editor tool.

Course Details:

Duration:

- 1-Day

Delivery Options:

- Virtual Instructor-Led (VILT)

Product Number (SKU):

- 3000PMUWEB1DAY

Prerequisites:

- Basic familiarity with PME
- Basic familiarity with Microsoft Windows operating systems

Students will be provided:

- Course material including presentations, labs, etc.
- Access to demo software for hands on lab assignments
- Certificate of completion
- CEUs: 0.6

Agenda:

1-day Agenda

Vista Overview

How to edit and modify Vista screens

How to create custom Vista screens

How Vista screens are used in the web client application Diagrams

This course typically runs **9am – 4pm (CT)** unless otherwise noted during the registration process.

Registration:

[Click here](#) to view available dates and to register for this course, or visit pmutraining.com

Question? Email pmu@se.com

PowerLogic™ & ION Metering Hardware

Installation & Maintenance (PLIONMETER)

Description:

This 2-day instructor-led course focuses on the installation, setup, and troubleshooting of PowerLogic™ and ION meters as well as associated communication devices. Through a series of instructor-led presentations and hands-on lab exercises, students will learn specific meter capabilities for proper placement throughout a facility. Participants will also learn how to correctly configure these devices using the ION Setup software. Meter display navigation to identify and resolve issues related to configuration, wiring, or network communications will also be covered.



Audience:

This course is designed for meter technicians, system engineers, energy managers and facility personnel who already have or plan to install Schneider Electric PowerLogic™ and/or ION meters and communication devices.

Course Details:

Duration:

- 2-Days

Delivery Type:

- Classroom (CR)

Product Number (SKU):

- 3000PMU2DAY

Prerequisites:

- Basic computer skills and experience with Microsoft Windows
- Working knowledge and understanding of electrical terminology, concepts and calculations, including an understanding of the relationships among current, voltage, power and power factor in three-phase circuits

Students will be provided:

- Course material including presentations, labs, etc.
- Lunch (classroom only)
- Access to demo hardware and software for hands-on lab assignments
- Certificate of completion
- 1.2 CEU's

Registration:

[Click here](#) to view available dates and to register for this course, or visit pmutrainig.com

Agenda:

Day 1	Day 2
Introduction to ION and PowerLogic™ Meters	ION Setup
Front Panel Navigation	CT / PT Wiring & Troubleshooting
Meter Communications	Communications Wiring & Troubleshooting

This course typically runs Tuesday – Wednesday, or Thursday-Friday, **9am – 4pm (CST)** unless otherwise noted during the registration process.

Question? Email pmu@se.com

Purchasing & Registration



Purchasing a seat for PMU Factory Training

Attending a PMU Factory Training event requires both a purchased seat as well as formal registration by each student wishing to attend.

There are two methods to purchase a seat in a PMU Factory Training event.

1. Credit Card

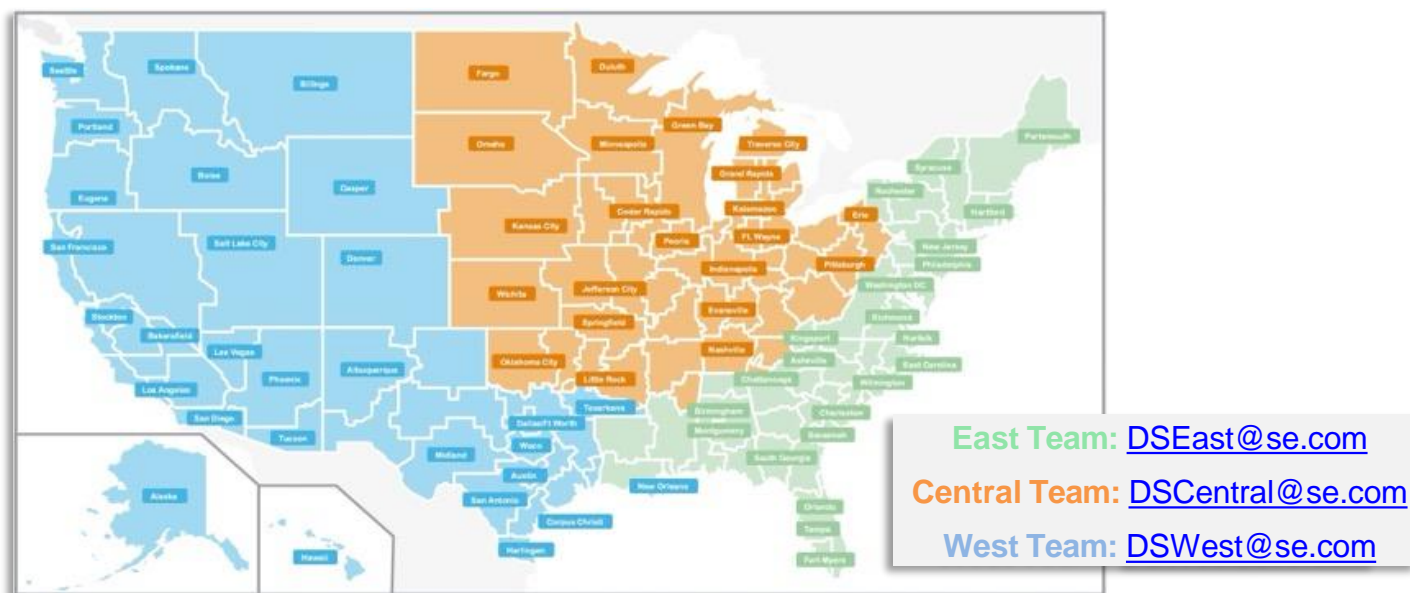
- PMU offers the option to purchase a Factory Training seat via credit card as part of the registration process (discussed later).
- This method offers a fast and convenient way to immediately confirm your seat in this event.
- Payments via Visa®, MasterCard®, or American Express® are accepted.
- Subject to individual approval.

2. Purchase Order (PO)

- To purchase a PMU Factory Training seat via a PO, you must first obtain a formal quote for a seat in the class (Instructions on the following page).
- Due to registration deadlines and limited seating, we highly recommend completing course registration (discussed later) as soon as the quote has been created.
- **IMPORTANT!** Submitting a PO for PMU Factory Training **DOES NOT AUTOMATE THE REGISTRATION PROCESS!**
- Each student must still individually register for each class they wish to attend (instructions in the following section).

Requesting a Quote for PMU Factory Training

To request a formal quote for PMU Factory Training events, contact the appropriate Digital Services Sales team as indicated via the table below.



Be sure to include as much information as you can to ensure the appropriate part #s are being quote. The below table provides an overview of the various Factory Training events and the specific Part #s that need to be ordered based on the delivery method.

Submitting a PO for a Factory Training course **DOES NOT REGISTER** you for that training. Each student must individually register for each class they wish to attend (discussed next).

Factory Course Name	Course ID#	Delivery Method	Part # (SKU)
PME: Operator Training	PMEOT100	Classroom (Nashville)	3000PMU3DAY
		Virtual (VILT)	3000PMUWEB3DAY
PME: Advanced Operator Training	PMEAOT200	Classroom (Nashville)	3000PMU3DAY
		Virtual (VILT)	3000PMUWEB3DAY
PME: ION Architecture Programming using Designer	PMEIONPROG300	Classroom (Nashville)	3000PMU4DAY
		Virtual (VILT)	3000PMUWEB4DAY
PME: Energy Billing Module Deployment	PMEBILLMOD	Virtual (VILT)	3000PMUWEB1DAY
PME: TGML Graphics & User Diagrams	PMETGML	Virtual (VILT)	3000PMUWEB1DAY
PME: VISTA Graphics & User Diagrams	PMEVISTA	Virtual (VILT)	3000PMUWEB1DAY
PL & ION Metering Hardware: Installation & Maintenance	PLIONMETER	Classroom (Nashville)	3000PMU2DAY

Registering for PMU Factory Training

The following job aid provides guidance on how to formally register for a **Factory PMU Training Course**. These steps are required for each student planning to attend.

IMPORTANT! If you plan on purchasing your seat via Purchase Order (PO), you must first request a formal quote before proceeding. Instructions on how to request a quote are on the previous page.

1

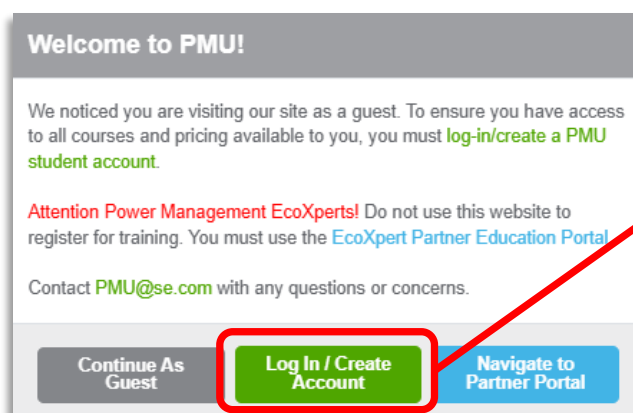
Navigate to www.pmutraining.com



2

Select **Log In/ Create Account** which will re-route you a new log in screen.

- Existing PMU students must enter their email and password (forgot password option available).
- New users must select *Register Here*.
- Contact pmu@se.com for any issues

A screenshot of the PMU login screen. The header features the Schneider Electric logo and the text "Welcome Login to PMU Training". There is a text input field for "Email". Below the field is a link for "Login with mobile". A large green button labeled "Continue" is prominently displayed. Below the button, it says "New user? Register Here". At the bottom, there is a section for "We process account registration information and connection logs for authentication and application access management. Privacy notice" with a link to the privacy policy. The screen also includes a "OR" separator and a small logo at the bottom.

How to Register for Factory PMU Training

Continued.....

3

Locate the course you wish to attend using either the Factory Training Options or Calendar options as shown below

The screenshot shows the top navigation bar of the Schneider Electric Power Management University website. The navigation bar includes links for HOME, FACTORY TRAINING, PRIVATE TRAINING, and RESOURCES. Below the navigation bar, there are two main sections: "2025 Factory Training Options" and "2025 Factory Training Calendar". The "2025 Factory Training Options" section is highlighted with a red box, and it contains a link to "FACTORY TRAINING CALENDAR".

4

Select one of the register buttons for the specific course & session you wish to attend.

The screenshot shows a table of course listings for December. The table has columns for Delivery Type, Course Name, Start / End Date & Time, Location, Part #, Web Price (USD), Seats Remaining, Register, Course Brochure, and Share. The first row of the table is highlighted, and the "Register" button in that row is circled in red. Below the table, there is a section titled "Intro to Web Client" with a list of topics: "Intro to User Management", "Intro to Device Types", "Viewing & Navigating Diagrams", "Intro to Power Fundamentals & Utility Bills", "Viewing & Creating Trends", "Viewing & Creating Reports", and "Viewing & Managing Alarms". At the bottom of the page, there are three buttons: "Register", "Download Course Brochure", and "Logistics Information". The "Register" button is circled in red.

Delivery Type	Course Name	Start / End Date & Time	Location	Part #	Web Price (USD)	Seats Remaining	Register	Course Brochure	Share
Virtual	EcoStruxure Power Monitoring Expert (PME) - Operator Training	12/9/2025 9:00 AM CT 12/11/2025 4:00 PM CT	Virtual Classroom	3000PMUWEB3DAY	\$2,990.23	3	Register		SHARE

This course typically runs Tuesday – Thursday, 9am – 4pm (CT) unless otherwise noted during the registration process.

[Register](#) [Download Course Brochure](#) [Logistics Information](#)

How to Register for Factory PMU Training

Continued.....

5

Confirm your **Student Information** , **Course Information**, and the **PMU Terms & Conditions** to **Proceed With Registration**.

1. Confirm Student Information:

If you are not the student that will be attending the course, please contact pmu@se.com for assistance.

Student Name: Kyle Bosworth

Student Number: ky10095bo

Student Company: Power Management University

Student Email: kyle.bosworthington@se.com

Student Mobile Phone: 555-555-5555

Student Address: 55 PMU Ave.

Student City: Boston

Student State/Province: MA

Student Zip/Postal Code: 555555

2. Confirm Course Information:

Course Name: EcoStruxure Power Monitoring Expert (PME) - Advanced Operator Training - PMEAT200

Location: Nashville (Franklin), TN

Date(s): 5/12/2026 - 5/14/2026

i Enduser Web/Direct Price (USD): \$3,190.77

3. Confirm PMU Terms & Conditions:

☒ Click here to acknowledge & accept our **Terms & Conditions** for factory training events.

Proceed With Registration

Cancel Registration

How to Register for Factory PMU Training

Continued.....

6

Select the appropriate course payment method from the drop-down list as shown below. Guidance on each available option, when they should be used and how to proceed with each is provided below.

PAYMENT INFORMATION

Your Name: Kyle Bosworth
Your Company: Power Management University
Your Student Number: ky10095bo
Course Registering For: EcoStruxure Power Monitoring Expert (PME) - Advanced Operator Training - PMEOT200
Location: Nashville (Franklin), TN
Date(s): 5/12/2026 - 5/14/2026 Enduser Web/Direct Price (USD): \$3,190.77

Please fill out the form below to register for this course. A valid form of payment is required to register.

[Payment FAQs](#)

Course Payment Options:

-- Please select an option --

Submit

Back

Factory Course Payment Options

1. **Credit Card** – If selected, user will be prompted to enter a discount code (if applicable). Click Submit to proceed to a final review page, and then click Pay Now to proceed. This will route you to our secure PayPal™ screen where you can check out via PayPal™ or directly enter your credit card details.
2. **Purchase Order** – If selected, user will be required enter the valid Schneider Electric Sales Quote # created for this class. Guidance on how to obtain a valid quote is provided in a previous section in this document.
3. **Prepaid Voucher** – This option is only to be used for students that have previously paid for a Factory Training event but were not able to attend and issued a voucher. If selected, user will be prompted to enter this voucher number.
4. **Schneider Electric Employee** – This option is for internal SE employees only.
5. **Work Order (WO)** – This option is only available to customers with an active EcoStruxure™ Service Plans (ESP) who wish to use one of their un-used onsite service days to cover the cost of a seat in a PMU training class.

How to Register for Factory PMU Training


Continued.....

7

Once the registration has been submitted, you will receive an email from NoReply@verified.se.com advising you of your registration status. Depending on the payment method selected, the email will indicate one of the following:

Registration Received

Your PMU Registration Has Been Received

 NoReply.PMU@verified.se.com
To ✓ ron.zolkower@se.com


Thank you, your registration has been received. Please review the following information:

Course: EcoStruxure Power Monitoring Expert (PME) - Operator Training
Date(s): 12/9/2025 - 12/11/2025
Location: Virtual Classroom

Your registration has been received but your seat is **NOT confirmed** until additional information can be validated, such as PO status.

Registration Confirmation

Registration Confirmation

 NoReply.PMU@verified.se.com
To ✓ ron.zolkower@se.com

Welcome Ron Zolkower to Power Management University training.

Please review the following information in its entirety.

Congratulations! Your payment has been arranged and your seat is confirmed.

Your registration has been received, and your seat is **confirmed!** For classroom events, this email will also contain course logistical information so you can plan travel.

9

In addition to the registration confirmation, you may also receive additional emails before the scheduled event with reminders and additional details such as meeting access instructions for virtual events.



Contact pmu@se.com at anytime if you need assistance!



PMU
TRAINING CENTER